

## Casual Olive Dress Tutorial

### Description











You can never have too many simple dresses, especially for summer. Wear this dress on its own, or with a simple belt around your waist.' This tutorial' covers some of the simple techniques we have looked at in the past and best thing about it is that it won't take too much of your time. Enjoy!

## ***Material***

1.5 yards of [IL019 Olive Softened](#)  
Matching sewing thread

## ***Tools***

Pattern paper, Pattern master

Paper and fabric scissors  
Erasable fabric marker  
Measuring tape, Pin  
Blind Hem stitching foot  
Sewing machine, Iron



## ***Time***

2-3 hours

## ***Difficulty***

Intermediate

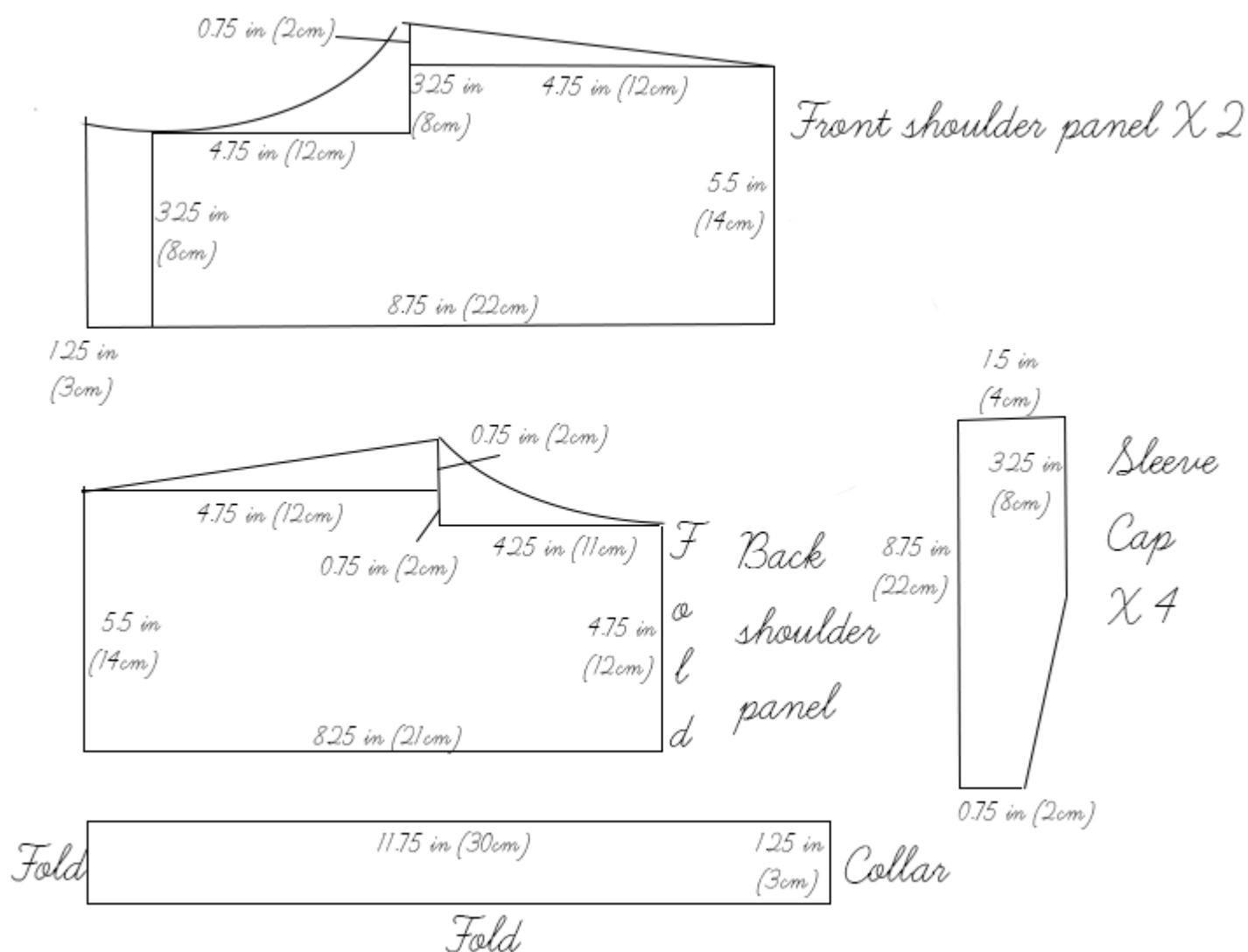
## ***Step***



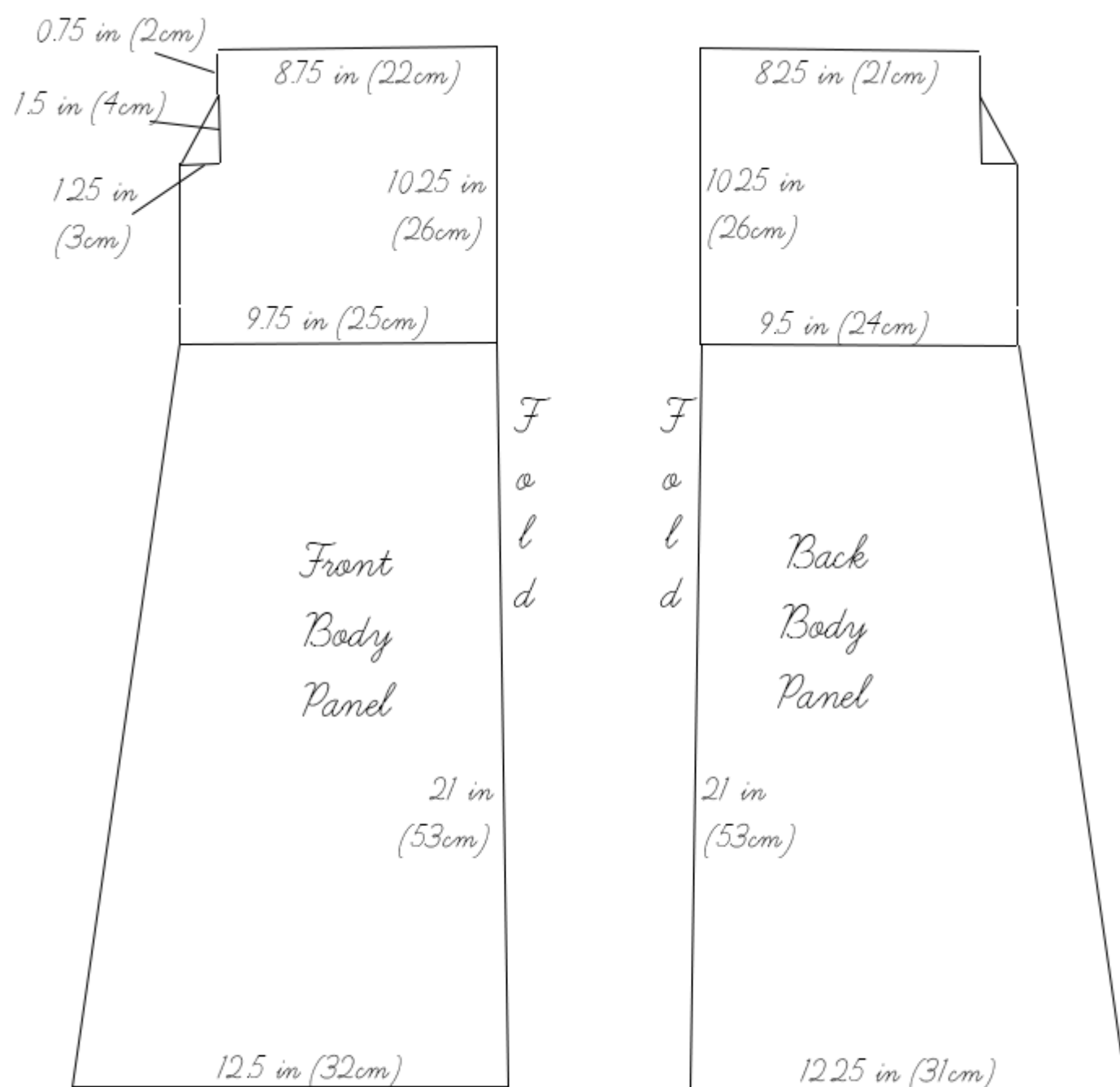
Note: Prewash your fabric and tumble dry it until it is still slightly moist, let this dry in room temperature.

1. Iron the fabric so it is easier to work with
2. Follow the diagram and cut out the pieces, including seam allowance  $\frac{3}{8}$  inch (1cm) and the notch marks. Note: Marking the centre point of the main body panel will be very useful too.











3. The diagram shows the pattern for a size 4-6 (UK size 8-10). Adjust by adding 1 inch (2.5cm) to each seams for each size up, or take away an inch (2.5cm) for each size downwards.
4. Use a serger, or choose your own method to protect the seams from fraying. Make sure the method you choose does not add weight to the fabric.
5. Press 1 1/4 inches (3cm) from the centre seam on the smaller panels toward its wrong side.



6. Top stitch along the seam.



7. Pin the top panels onto the bottom panel. Stitch and press the seams open.





8. Pin the shoulder seam of the front and back top panels together. Stitch and press open.





9. Pin along the side seam up to where the armhole begins. Stitch and press open.

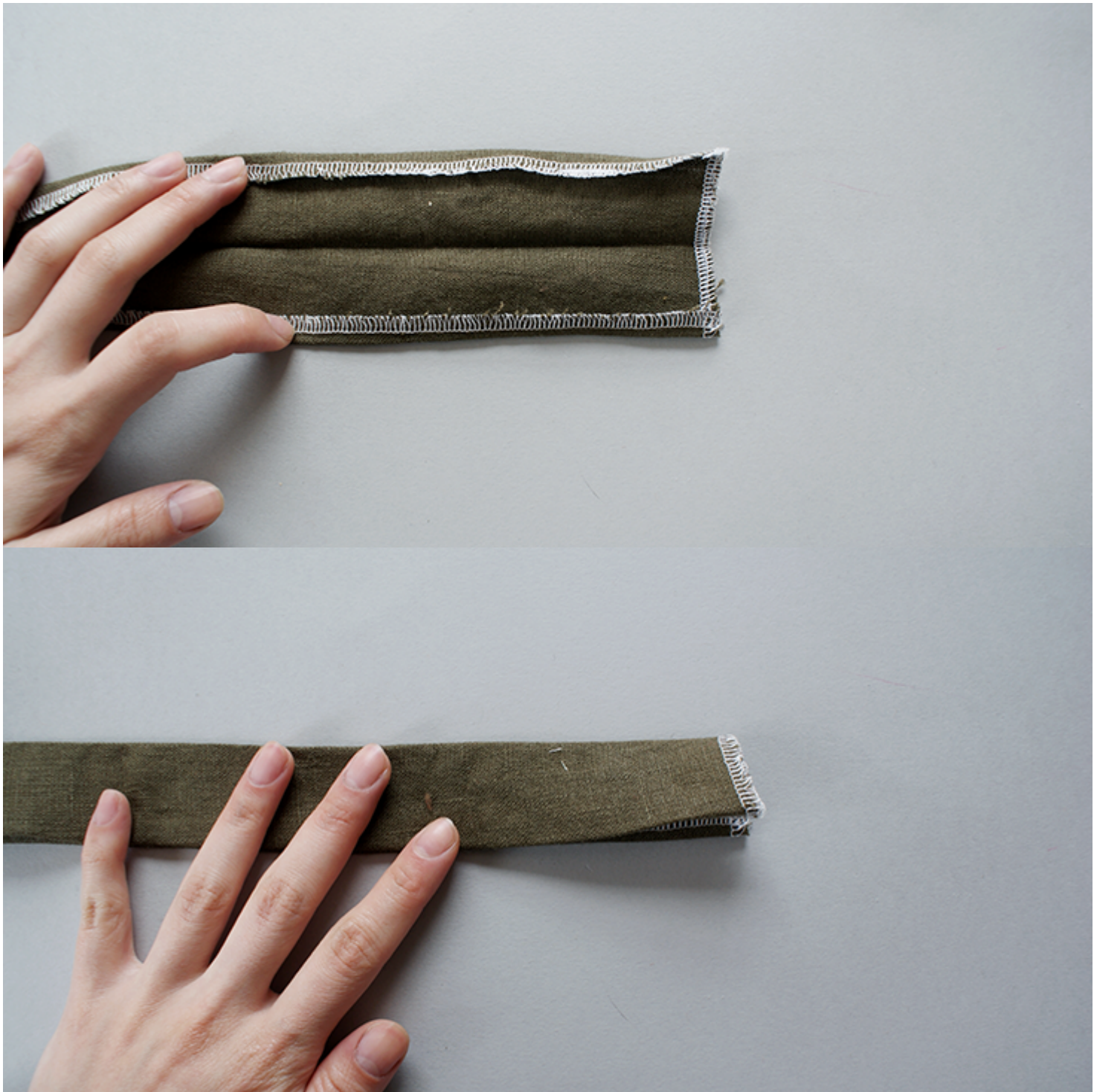


10. Fold 3/8 inch (1cm) of the collar stand onto its wrong side on both long



edges. Press.

11. Then, press the folded collar stand in half, with the pressed edge inside the fold.



12. With the wrong side facing you, stitch along the 3/8 inch (1cm) seam



allowance on the shorted edge of the collar stand.



13. Trim the triangle off the inner corner of the stand, this is to reduce excessive fabric.





14. Reverse the collar stand back onto its right side, and pin it carefully around the collar of the main bodice.



15. Stitch and press to set it.

16. Press  $\frac{3}{8}$  inch (1cm) seam allowance on all the long straight edges of all 4 sleeve panels onto its wrong side.





17. Match up the pair of sleeve panels and pin along the raw edge, with the wrong side facing you. Stitch and press.





18. Notch along the stitched edge to allow fabric to be reversed.



19. Still with the wrong side facing you, join the sleeve panel into a loop by stitching together the shorter edge together. Press.



20. With the edge stitched, reverse the sleeve panels onto its right side.





21. Pin the panels along the arm holes, making sure both side of the folded edges are caught by the needle. Stitch and press to set.





22. Following [this tutorial](#), and with the help of the blind hem stitching foot, you will create an invisible machine stitched hem for the bottom of your skirt.



**A 'great item' to add to your summer wardrobe. Why not take a look at our plethora of fabric and choose the one that inspire you the most today?'**

## CATEGORY

1. TUTORIALS

## POST TAG

1. dress tutorial
2. fabrics-store
3. free tutorial
4. linen
5. linen fabric



6. tutorial

## Category

1. TUTORIALS

## Tags

- 1. dress tutorial
- 2. fabrics-store
- 3. free tutorial
- 4. linen
- 5. linen fabric
- 6. tutorial

## Date Created

May 4, 2015

## Author

cynthia-fong